

Renal - Hemorrhage

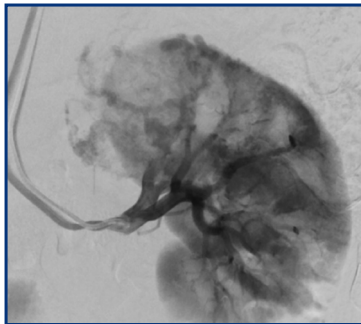
Jeremy I. Kim, MD, Charlotte Radiology, Charlotte, NC

Patient Presentation

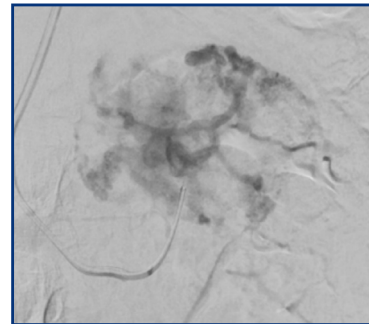
59-year-old male with no significant past medical history presenting with acute hemorrhage from ruptured 6.4 cm Angiomyolipoma (AML) of the left kidney.



Pre-embolization coronal CT image

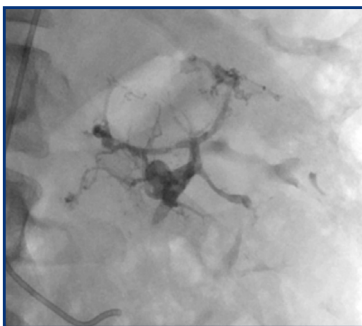


Pre-embolization angiogram of left kidney demonstrates hypervascular mass in the upper pole consistent with known AML.



Selective angiogram of AML

Post- Embolization



Post-embolization spot image demonstrates excellent casting of the AML vasculature.



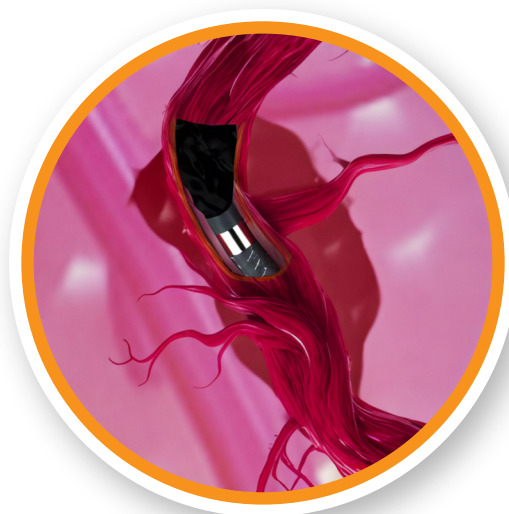
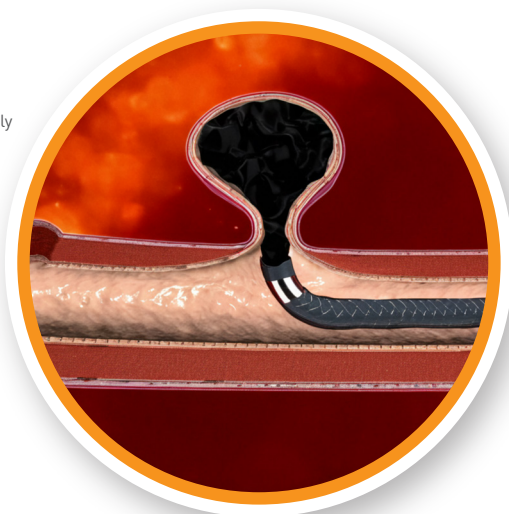
Post-embolization renal artery angiogram demonstrates no vascular flow to the AML and preserved vasculature to normal renal parenchyma.



1-Month Follow Up shows no complications post-embolization. Coronal CT image demonstrating near-complete necrosis with smaller 5.3 cm size.

The FIRST and ONLY liquid embolic approved for the treatment of peripheral arterial hemorrhage

Images are for illustration purposes only



LAVA 18 - 6 mL



LAVA 18 - 2 mL



LAVA 34 - 6 mL



LAVA 34 - 2 mL

Personalized

Controlled

Effective¹



Scan Here to
Schedule a
LAVA Demo



Scan Here to
learn more
about LAVA

Reference:

1. <https://www.fda.gov/medical-devices/recently-approved-devices/lava-liquid-embolic-system-p220020>

Caution: U.S. federal law restricts the sale, distribution, and use of this product to physicians or as prescribed by a physician. This device should be used only by physicians with a thorough understanding of angiography and percutaneous interventional procedures, and the physician would have successfully completed training. **Indications for Use:** LAVA[®] LES is indicated for embolization of arterial hemorrhage in the peripheral vasculature. **Potential Complications:** Potential adverse effects (e.g., complications) associated with the use of the device include: Non-target embolization, Ischemia or infarction of the target territory, Allergic reactions to device components, Catheter breakage, Catheter entrapment, Inadvertent embolization of a non-target vessel or territory, Embolization of device components, Access site hematoma or ecchymosis, Access site false aneurysm, Pain at access site, Arterial dissection, Mural thrombus formation, Vessel perforation, Hemorrhage, Recanalization, Vessel perforation, Arteriovenous fistula, Distal atheroembolism, Infection, Sepsis, Serous drainage, Lymphorrhea, Leg edema, Leg pain, and Back pain. **Consult the Instructions for Use (www.sirtex.com/lava/risks_adverse-events) for a complete listing of indications, contraindications, potential complications, warnings, and precautions.**