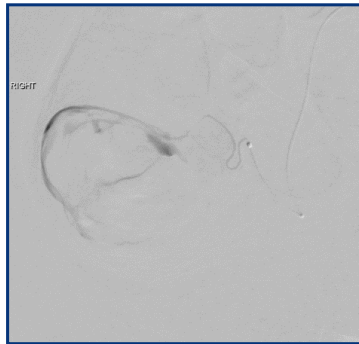


GI Hemorrhage - Lower GI

Bulent Arslan, MD, FSIR, RUSH University Medical Center Chicago, IL

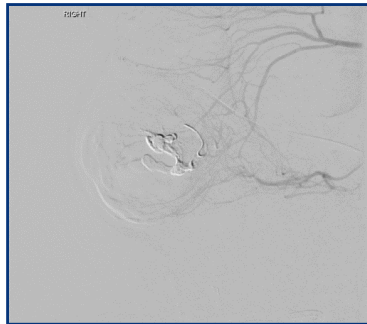
Patient Presentation

Lower GI Hemorrhage — Cecal

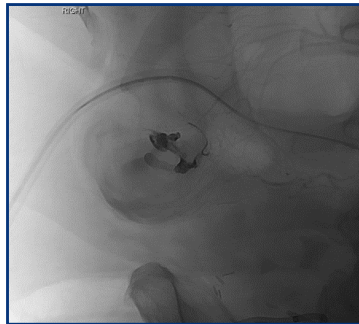


Cecal bleed from small submillimeter marginal branches — opted for LAVA 18 to travel distally to fill these small branches and treat the bleed.

Access & Treatment



Catheterization



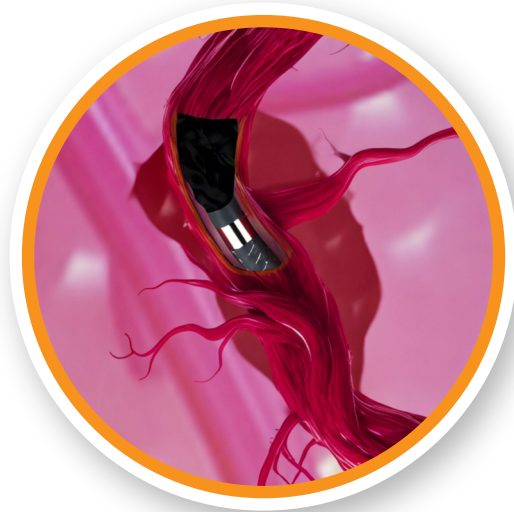
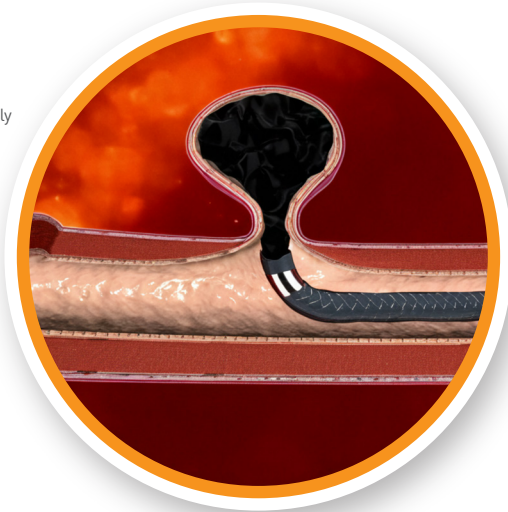
Injection of .6 mL of LAVA 18



Post-embolization:
Final angiogram from a more proximal approach does not show any bleeding.
No adverse events.

The FIRST and ONLY liquid embolic approved for the treatment of peripheral arterial hemorrhage¹

Images are for illustration purposes only



LAVA 18 - 6 mL



LAVA 18 - 2 mL



LAVA 34 - 6 mL



LAVA 34 - 2 mL

Personalized

Controlled

Effective¹



Scan Here to learn more about LAVA

Reference:

1. <https://www.fda.gov/medical-devices/recently-approved-devices/lava-liquid-embolic-system-p220020>

Caution: U.S. federal law restricts the sale, distribution, and use of this product to physicians or as prescribed by a physician. This device should be used only by physicians with a thorough understanding of angiography and percutaneous interventional procedures, and the physician would have successfully completed training. **Indications for Use:** LAVA[®] LES is indicated for embolization of arterial hemorrhage in the peripheral vasculature. **Potential Complications:** Potential adverse effects (e.g., complications) associated with the use of the device include: Non-target embolization, Ischemia or infarction of the target territory, Allergic reactions to device components, Catheter breakage, Catheter entrapment, Inadvertent embolization of a non-target vessel or territory, Embolization of device components, Access site hematoma or ecchymosis, Access site false aneurysm, Pain at access site, Arterial dissection, Mural thrombus formation, Vessel perforation, Hemorrhage, Recanalization, Vessel perforation, Arteriovenous fistula, Distal atheroembolism, Infection, Sepsis, Serous drainage, Lymphorrhea, Leg edema, Leg pain, and Back pain. **Consult the Instructions for Use (www.sirtex.com/lava/risks_adverse-events) for a complete listing of indications, contraindications, potential complications, warnings, and precautions.**