

The **FIRST** and **ONLY** liquid embolic approved for the treatment of peripheral arterial hemorrhage¹



LAVA 34 - 6 mL

LAVA 34 - 2 mL

LAVA 18 - 6 mL

LAVA 18 - 2 mL

Personalized Controlled Effective¹

LAVA[®] provides volume and viscosity options that optimize the flexibility you need to treat your patients with a controlled target vessel occlusion.

LAVA: Personalized & Controlled

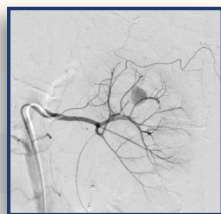
Personalized

- LAVA 2 mL and 6 mL vial options optimized for the peripheral vasculature
- Viscosity options allow distal embolization of small vessels that may be inaccessible via other embolics
- Multiple injection syringes provide options for personalized treatment
- Demonstrated to be safe and effective when used in combination with other embolic products, such as coils, vascular plugs, and gelfoam.²

Controlled

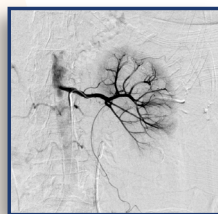
- Fills more volume/space³
- Tantalum level designed to reduce flash, minimizing interruptions during imaging⁴
- LAVA Mixing Kit enables preparation in under 5 minutes, intended for the emergent setting⁵
- Cohesiveness of product helps to prevent catheter entrapment

LAVA: Demonstrated Safe & Effective¹



The Primary Safety Endpoint

100% of patients experienced no major adverse events at 30 days¹



The Primary Effectiveness Endpoint

Clinical Success at 30 days was met in 94% of lesions¹



LAVA® Liquid Embolic System			
Item	Description	Item	Description
SLLES182	LAVA 18 - 2 mL	SLLESMK2	LAVA Mixing Kit - 2 mL
SLLES186	LAVA 18 - 6 mL	SLLESMK6	LAVA Mixing Kit - 6 mL
SLLES342	LAVA 34 - 2 mL		
SLLES346	LAVA 34 - 6 mL		



References:

- <https://www.fda.gov/medical-devices/recently-approved-devices/lava-liquid-embolic-system-p220020>
- Based on clinical study on file (TPR-00913.01.A).
- Arstan, et al. J Vasc Interv Radiol 2025; 36:436-445.
- Based on data on file (TPR-01005.02.A).
- Based on data on file: (TPR-00616.01.A and TPR-00499-02.A)

Fluoroscopic images courtesy of Gary P. Siskin, MD - Albany Medical Center

Caution: U.S. federal law restricts the sale, distribution, and use of this product to physicians or as prescribed by a physician. This device should be used only by physicians with a thorough understanding of angiography and percutaneous interventional procedures, and the physician would have successfully completed training. **Indications for Use:** LAVA® LES is indicated for embolization of arterial hemorrhage in the peripheral vasculature. **Potential Complications:** Potential adverse effects (e.g., complications) associated with the use of the device include: Non-target embolization, Ischemia or infarction of the target territory, Allergic reactions to device components, Catheter breakage, Catheter entrapment, Inadvertent embolization of a non-target vessel or territory, Embolization of device components, Access site hematoma or ecchymosis, Access site false aneurysm, Pain at access site, Arterial dissection, Mural thrombus formation, Vessel perforation, Hemorrhage, Recanalization, Vessel perforation, Arteriovenous fistula, Distal atheroembolism, Infection, Sepsis, Serous drainage, Lymphorrhea, Leg edema, Leg pain, and Back pain. **Consult the Instructions for Use (www.sirtex.com/lava/risks_adverse-events) for a complete listing of indications, contraindications, potential complications, warnings, and precautions.**